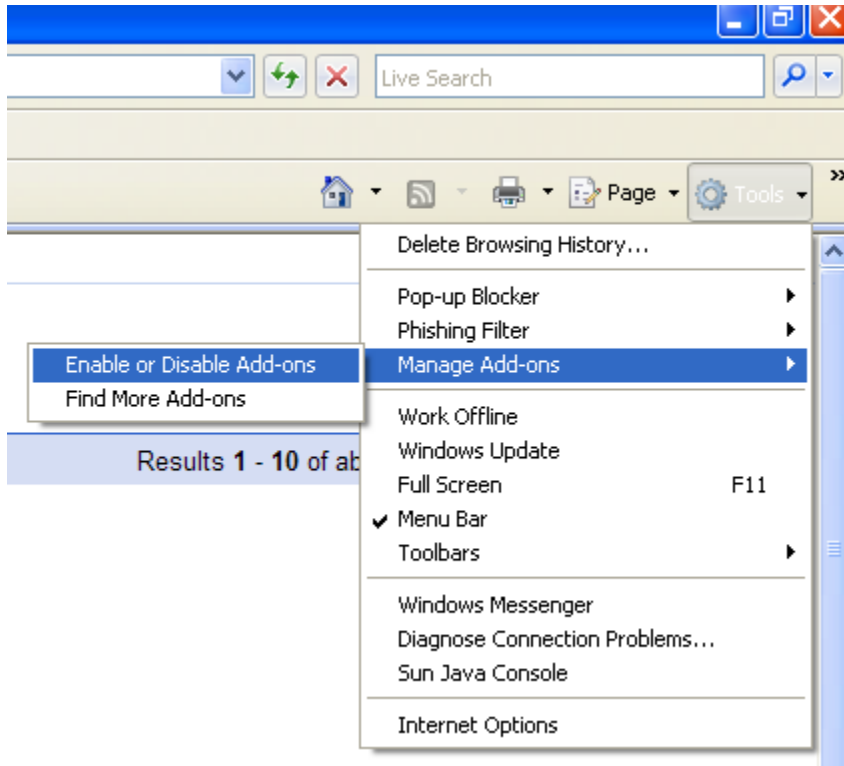
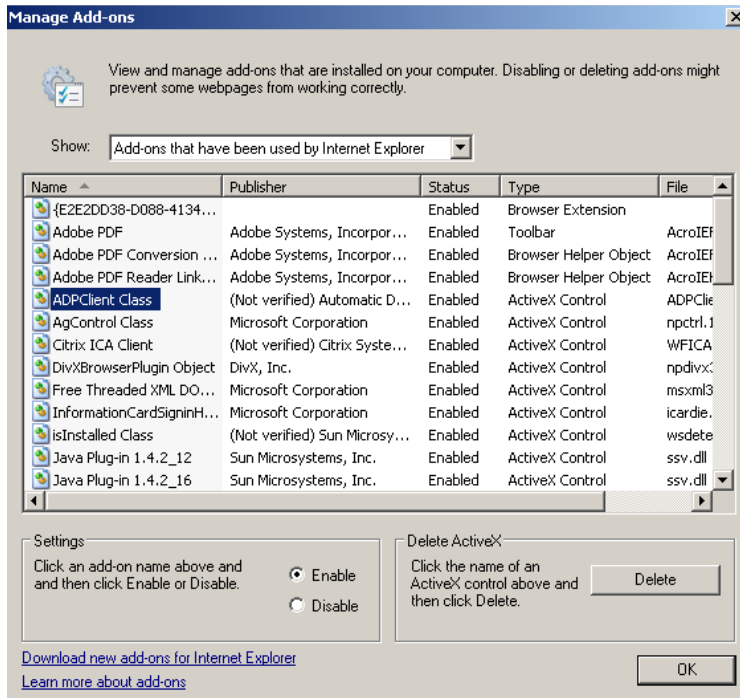


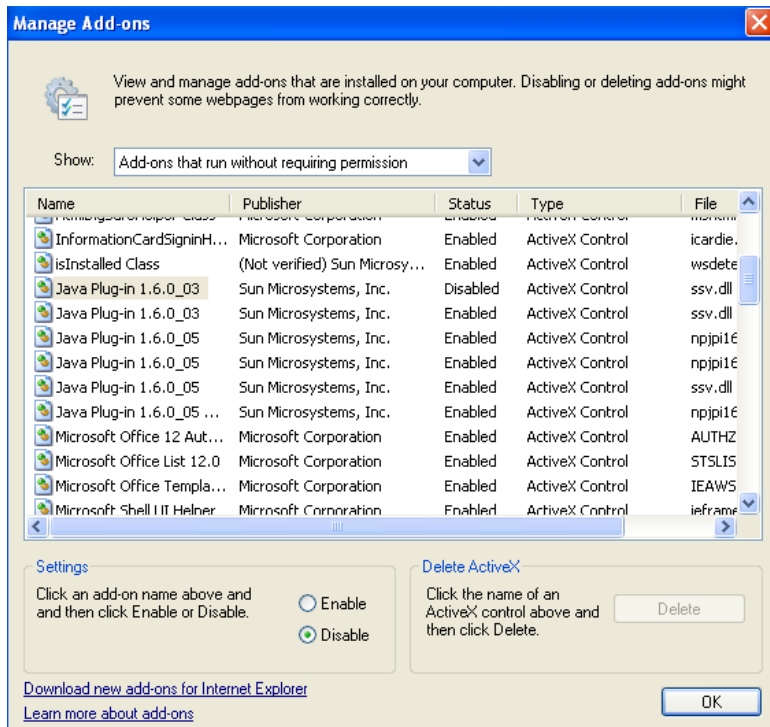
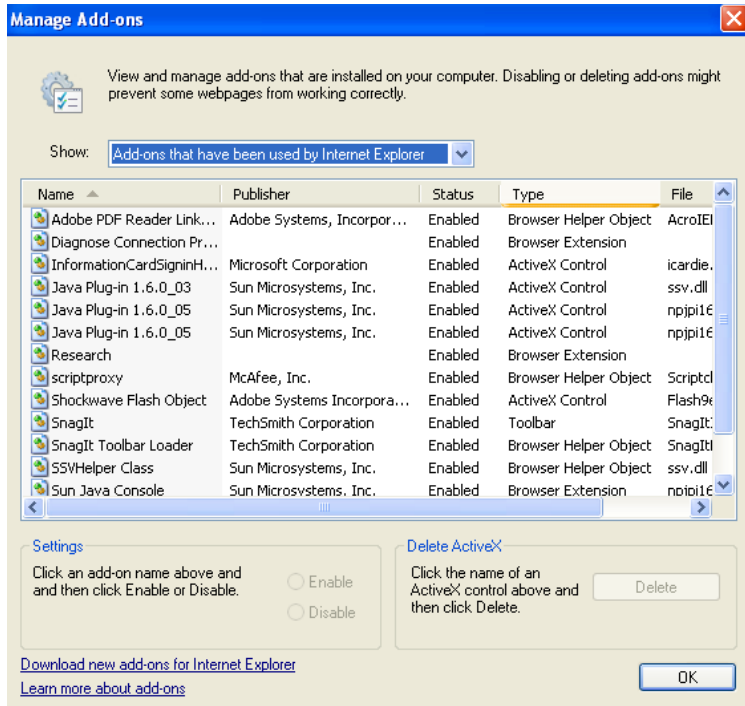
In order to fix the jre error go to internet options and manage add-ons. Administrative rights on the computer may be needed



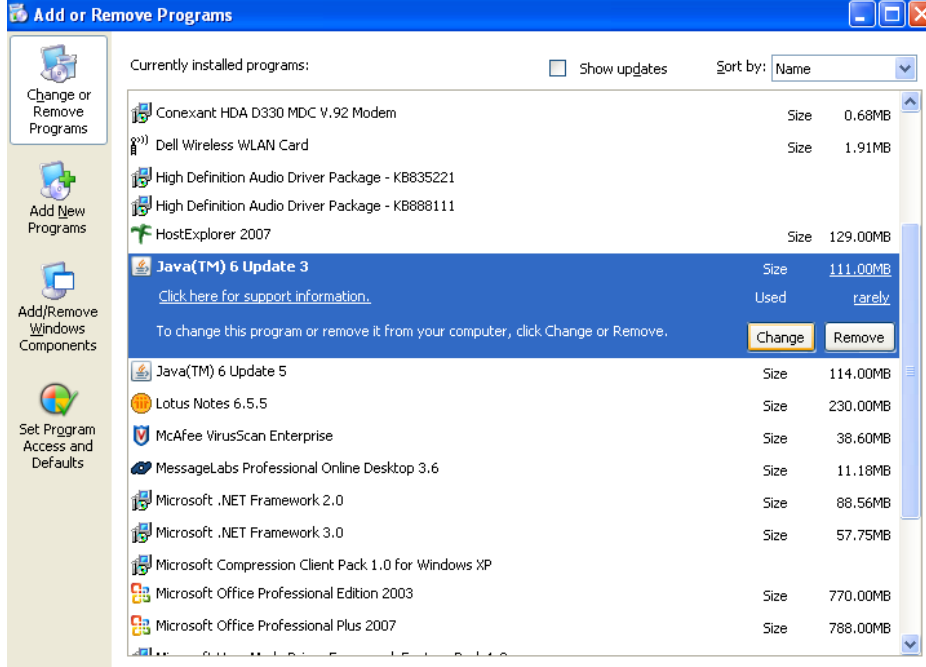
Show Add-ons that have been used by Internet Explorer, and disable ADPClient Class



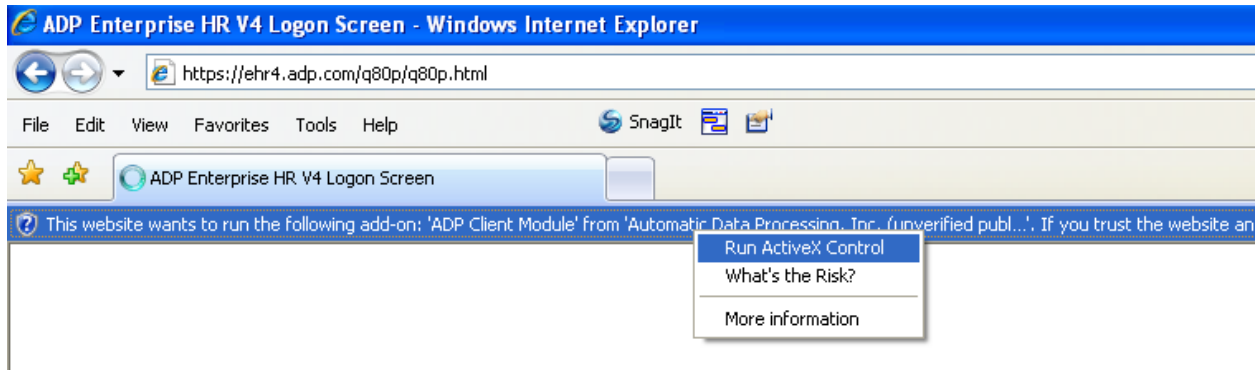
Alternative to the fix above delete or disable all Java and ADP add-ons



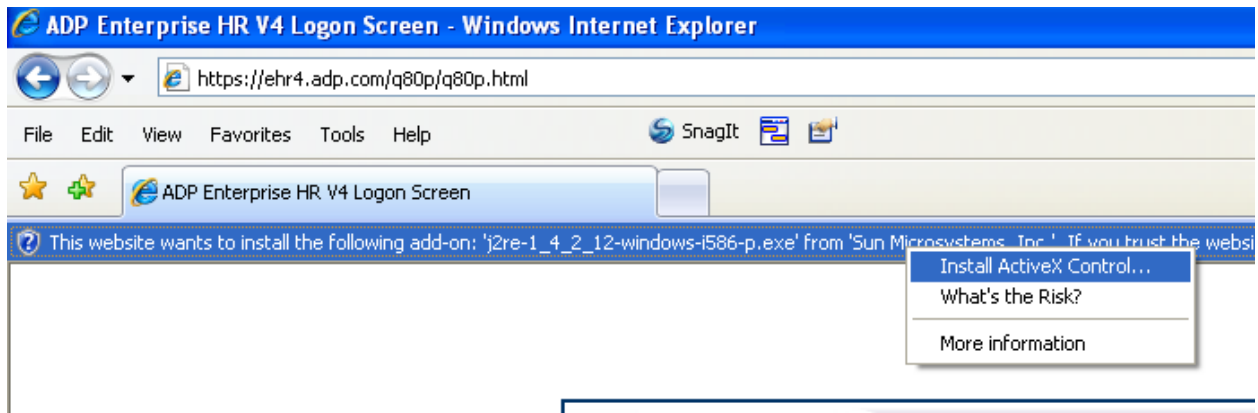
Uninstall all Java applications running in the computer



Go to <http://ptp.fiu.edu/ev4> and when prompted click Run ActiveX Control , the installation may take more than 3 minutes



When prompted click Install ActiveX Control , the installation may take more than 3 minutes



When Prompted for jre click install, at the end of the instalation restart computer



After restarting the computer and going to EV4 when prompted with message below click "Always"

